

**PURPOSE BUILT STUDENT ACCOMMODATION**

**PRIVATE STUDENT DORMITORY FOR DEVELOPMENT**

# **PBSA AT BOROWSKIEGO STREET IN WARSAW**



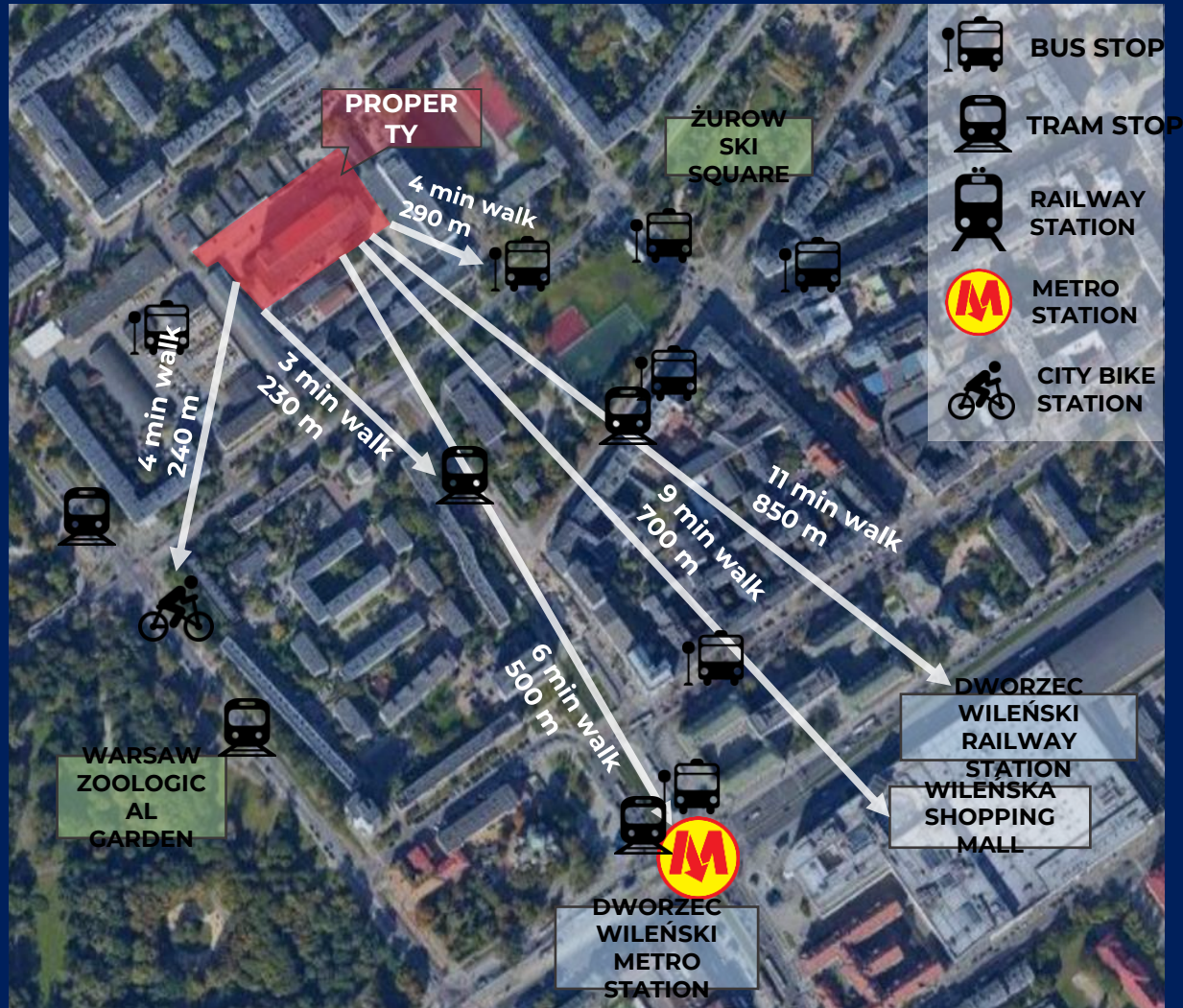
**FRONTIER**

[www.frontier-estates-europe.com](http://www.frontier-estates-europe.com)

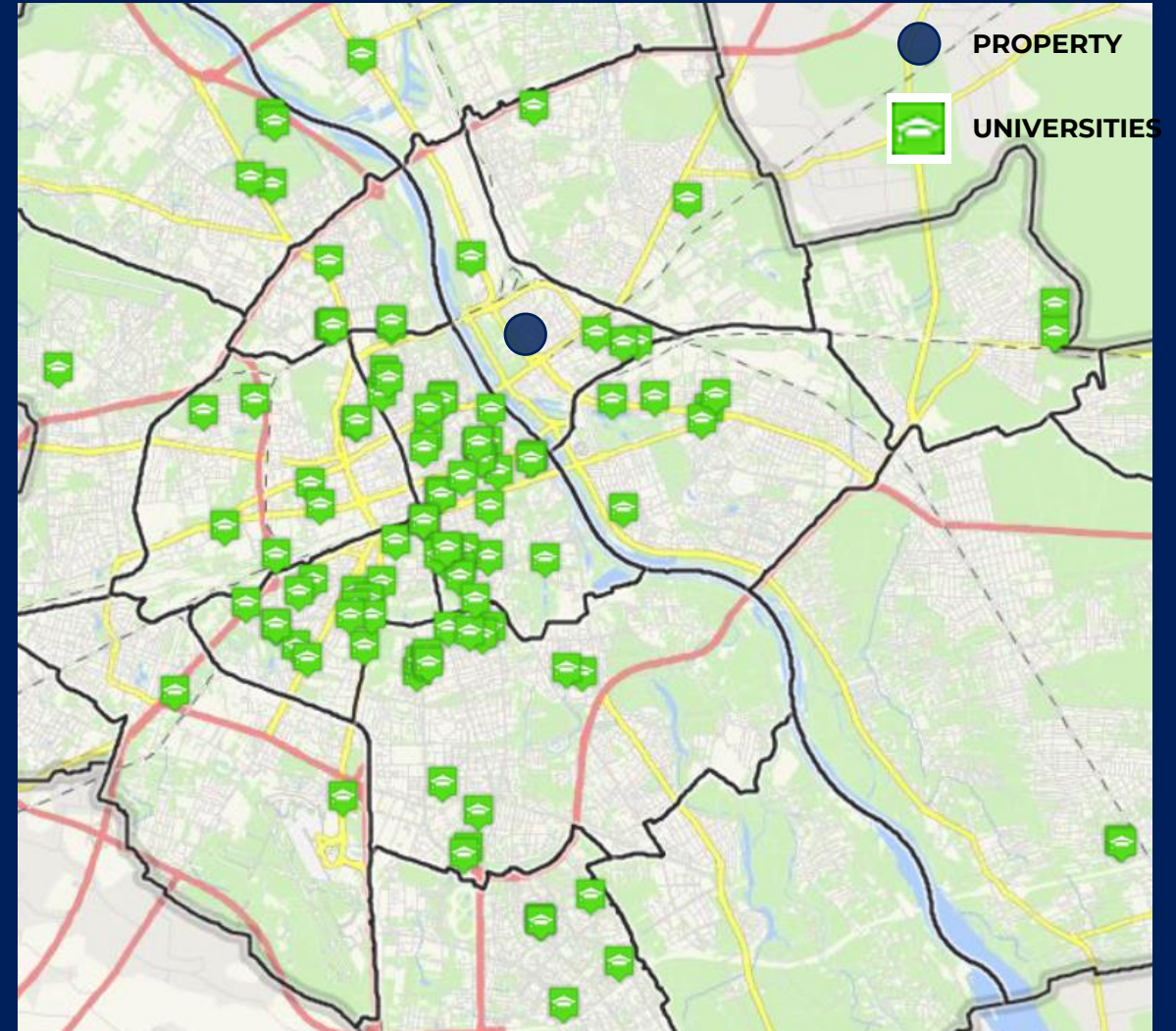


# LOCATION

- The property is located at Borowskiego Street in the Praga North district with convenient access to public transport.



Public transportation accessibility

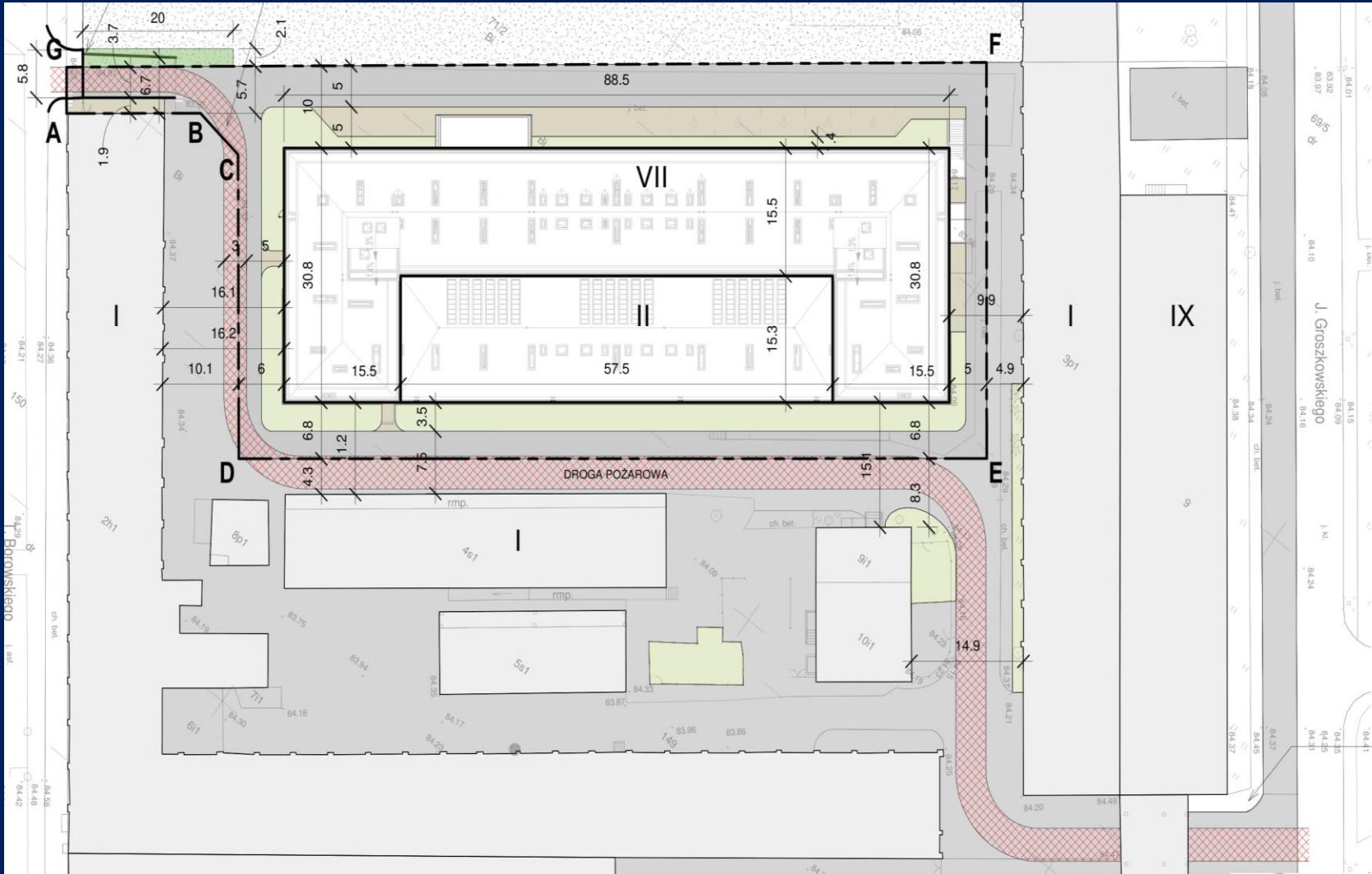


Availability of universities



# FRONTIER PBSA CONCEPT

- Planned building will have a height between 2 to 7 storeys with underground level.



SOURCE: FRONTIER ESTATES ANALYSIS

- The property is located in the eastern part of Warsaw where the majority of universities are private and has convenient access to two of the largest private universities;
- Planned c.a. 580 units;
- Flexible interior design allowing for quick adjustments of the floor plan by changing the no. of 1 bedroom studios;
- Amenities for students in the ground floor offering variety of social space;
- Bike spaces, storage rooms, student club in the basement;
- Opening Q3 2023**

# FRONTIER PBSA CONCEPT





# CONTACT DETAILS

**FRONTIER ESTATES POLSKA MANAGEMENT  
SP. Z O.O.**

19 Chmielna Street  
4 th floor  
Warsaw, 00-021

**IAN CHURCH FRICS FCI OB**

Director Poland  
[ian.church@frontier-estates.pl](mailto:ian.church@frontier-estates.pl)



[www.frontier-estates-europe.com](http://www.frontier-estates-europe.com)